

# Nick's Hometown Resort! 2022/23 Travel Planner

The #1 Family Resort  
Best Snow Conditions  
Affordable Family Fun



# SKI BRULE

*Ride With  
Nick Baumgartner  
At Ski Brule!*

**1-800-DO-BRULE • [www.skibrule.com](http://www.skibrule.com)  
397 Brule Mountain Rd., Iron River, Michigan**



Welcome to the slopes  
where Nick Baumgartner  
learned to ride



**Create your family memories at Ski Brule.**

Located in Michigan's Upper Peninsula, Ski Brule is surrounded by majestic views and the only sound will be snowflakes falling. No big city lights here. What you will find is a special place that welcomes you from the moment you arrive. Ski Brule is looking forward to your visit.

Ski Brule made a promise over 60 years ago, to provide quality, family fun at an affordable price, to be the friendliest, most outgoing, helpful resort with a variety of recreational opportunities. These are just some of the reasons so many choose Ski Brule.

# The Best Snow

*2022/23 Target Opening Day: November 11, 2022*

**Ski Brule will provide the best conditions  
& will be the first to open with the  
longest season in the region.**

Why is it impossible to tell the difference between "Brule Made" and "Mother Nature Made" snow? For starters, snowmaking is truly a science. It's not just as simple as turning on the system. It takes years of experience; a dedicated snowmaking team, and trade secrets to make Ski Brule's snow the best there is.

As soon as temperatures drop (as early as October), Ski Brule will fire up the snowmaking system to bring you the best snow in the region.



**1-800-362-7853**

**[info@skibrule.com](mailto:info@skibrule.com)**



# Play More At



## *Save More, Play More!*



### **\$55 Advanced Lift Tickets On Sale At:**

**Appleton:** Play It Again Sports

**Green Bay:** Zellers & Play It Again Sports

**Oshkosh:** Play It Again Sports & Skiers Outlet

**Illinois:** Viking Ski Shop

**Online at [www.skibrule.com](http://www.skibrule.com)**

Kids Lift Ticket Are FREE

\$3 Off Senior & Military

\$80 Lift & Lodging Special

1/2 Price Brule Bash Costume Tickets

\$40 Group Trip Tickets

\$51 Sat. Group Trip Tickets

\$32 Youth Group Trip Includes Ticket, Lesson, Rental & Lunch

\$76 Family BBQ Includes 2 Adults &

Up To 4 Children Age 17 & Under

**Contact Ski Brule for complete details & restrictions [info@skibrule.com](mailto:info@skibrule.com)**

### ***Friends & Neighbors Specials***

\$15 Kids Sunday Rental\*

FREE Tubing Sunday\*

\$1.25 Small Hot Cocoa

10% Off Evening Dining

FREE Kids Mac & Cheese Sunday\*

\$1 Small Fountain Soda & Coffee

5% Off Winter Lodging, Retail

Merchandise & Rental Equipment

***Limitations & restrictions apply, subject to availability & prices subject to change based on market conditions. Single discounts only. \*Excludes 12/24-1/2 and requires ticketed guest/adult.***

### **Join Friends & Neighbors**

It's free to join! It's as easy as completing the enrollment form, turn in at Ski Brule & start saving with your Friends & Neighbors Membership .



# #1 For Kids

## FREE Kids Tickets

SKIWee is the best way to start your child on snow. Not only will your child learn to ski with a HUGE smile, but you also won't get frustrated trying to teach your own child. The kids learn about their equipment, walking, sliding, riding the towrope, carrying their own gear (so you won't have to) and how to get up after a fall. It is three hours of fun on and off the snow so you can get some turns in too! The best part is they learn to ski through fun and games which makes it a positive experience. Smiles all around as the children ski, play on the slides, bounce house, sip hot cocoa & more!

Childcare is ideal for those not ready to ski or in need of a break. Children's activities include art, face painting, story time and outdoor fun (dependent on children's ages & weather).

### Kid's Center

AM Session	9 - 12:00
Lunch Session	12 - 1:00
PM Session	1 - 4:00

### SKIWee & Childcare

1 Session	\$50
2 Sessions	\$80
2 Sessions & Lunch	\$91
Lunch	\$20

### Rental Equipment

1 Session	\$26
2 Sessions	\$29

### Minimum Age

SKIWee	4 years
Childcare	1 year



Contact Ski Brule for early season & late season schedule. 24 Hour advance reservations required, except Saturdays.



397 Brule Mountain Road, Iron River MI 49935

# Learn A Sport Of A Lifetime



## **Snow School Lessons:**

Lesson Time: 9:30, 10:45, 12:00,  
1:15 & 2:30

## **Private Lesson:**

1 hr. \$70, 3 hr. \$198

## **Semi Private:**

1 hr. \$60/prsn, 3hr \$170/prsn  
2 or more people of similar age  
(10 & up) & ability that would like  
to learn together.

## **Group Ski:** 1 hr. \$40/prsn

Four or more adults of  
similar ability.

## **Lessons are the best way to begin a lifetime sport.**

Skiing & snowboarding are outdoor recreational sports that you can enjoy from the time you can walk and when you are 'young at heart'. Taking up a winter sport will make you wish for a longer winter!

From 'first timers' to advanced lessons, Ski Brule will have you smiling on the slopes. Stop at Guest Services to book your lesson and get outside more this winter.



## **Everyone started by taking a lesson.**



## **When To Start Children Skiing or Snowboarding:**

The short answer is, "when your child is balanced on their feet and show an interest in learning". There is no 'magic age' to begin as every child is unique. Children's one and three hour private lessons are available. Stop by Guest Services to reserve a lesson.





## Homestead Lodge

The Homestead Lodge is a unique stop at Ski Brule. Homesteaded in the 1800's by the Oberg family, the lodge is decorated with antiques and farm implements that were once used to work the land on which it sits.

The scent of grilling will greet you as you a ride North Forty or Homestead trails. Lunch and beverages (bar service too) on the sunny deck is a 'must do' during a visit to Ski Brule. Warm up by one of the antique pot

belly stoves and watch the skiers. You will be glad you stopped by.

## Homestead BBQ, Tubing & Sleigh Ride

Experience the BBQ at Ski Brule. For starters, ride the shuttle bus to a campfire at the base of Homestead Trail to roast marshmallows while you wait to catch the sleigh ride to the BBQ dinner. As you arrive at the lodge, live music will have you tapping your toes. Then feast on Ski Brule's famous pulled pork, bbq chicken, baked beans, sauerkraut, salad, mashed potatoes, gravy, apple sauce, rolls, cake and one beer, wine, or soda. Dinner tickets are available at Lodging Office, Bears Den Pro Shop and Guest Services.



## Homestead BBQ, Tubing & Sleigh Ride



5-8:00 on Saturdays and 12/26, 12/28, 12/30 & 3/23.  
BBQ is not available 12/24.

**BBQ Dinner:** Adult \$18, Junior \$14, Kids \$10

**Friends & Neighbors Save! \$16 Adult, \$13 Jr, \$9 Kids**

Family BBQ Dinner \$76\*

*Family BBQ includes 2 adults & 4 kids ages 17 & under.*

**Tubing:** 5-8:00, \$10/prsn, unlimited rides



**1-800-362-7853**

**info@skibrule.com**

# Feed Your Snow Adventure!

## Brule Saloon & Evening Dining

Dining & Beverages.

Steak, Salad, Burgers, Wraps & More.

Entertainment Most Weekends.

Drink & Dinner Specials.

Delivery To Brule Village.

Best Views Of Slopes!



## Brule Café

Opens at 8:00 for breakfast and serves until 4:00. Lunch options include burgers, brats, fries, cheese curds, pizza, salad, pasty & more.



## 'UP North Style' Fish Fry

Fridays, 5-8:00

at Brule Saloon.

Perch, Cod & Shrimp





# BRULE AREA



## HOMESTEAD AREA

### Facility Pass Rates & Discounts

Facility Pass Rates	Daily Ticket 9-4:00	Night Ticket 4:30-7:30**	Add Night Ticket to Day Ticket	Snowshoe Ticket	Nordic Ticket	Homestead Tubing	Whitewater Tubing 5 Runs	Fat Bike Trails
Adults (18+)	\$70	\$10	FREE	\$12	\$12	\$10	\$10	\$12
Juniors (10-17)	\$58	\$10	FREE	\$12	\$12	\$10	\$10	\$12
Kids (0-9)	FREE	FREE	FREE	FREE	FREE	\$10	\$10	FREE
Seniors (60+)	\$67	\$10	FREE	\$12	\$12	\$10	\$10	\$12
Discounts Single Discounts only	1/2 Day Ticket 12:00	1/2 Day Nordic 12:00	Multi 2 Day Ticket	Multi 3 day Ticket	Military Discount			
Adults	\$5 Off	\$3 Off	\$6 Off	\$12 Off	\$3 Off			
Juniors	\$3 Off	\$3 Off	\$4 Off	\$9 Off	N/A			
Kids	FREE	FREE	FREE	FREE	N/A			

\*\*Night session terrain includes Bunny, Bambi, Rapids & Lower Sunrise trails, serviced by Pony Handle Tow & Bambi Rope Tow.

### BUILDINGS

- A** Homestead Lodge
- B** Brule Lodge, Café, Saloon, Bear's Den Pro Shop, Guest Services & Lodging Office
- C** Rental Center & Tech Center
- D** Kid's Center
- E** Ski Patrol
- F** Top of Hill Ski Patrol
- G** Homestead Ski Patrol
- H** Pioneer Lodge
- I** Race Competition Center

**Groomer Rides:** 5:30 pm by reservation on night session nights, starting 12/26.

**Marshmallow Roast:** 5:00 pm Thursday & 12/25, 12/27, 12/29 & 3/21 by reservation.



1-800-DO-BRULE

info@skibrule.com



## HOMESTEAD AREA



## Mountain Stats

17 Trails • 11 Lifts  
150 Skiable Acres  
Longest Run: 1 Mile  
23 KM Nordic Trails  
23 KM Fat Tire Bike Trails  
23 KM Snowshoe Trails

## LIFTS

- 1 Spillway T-Bar
- 2 Homestead Chair
- 3 North Forty Chair
- 4 Fast Track Pony
- 5 Snowshoe Chair
- 6 Sunrise Chair
- 7 Whitewater Tube Tow
- 8 Whitewater T-Bar
- 9 Big Bear Chair
- 10 Bambi Rope
- 11 Bunny Rope
- 12 Gentle Ben Rope

Errors or omissions subject to correction and rates subject to change.

## LOCATIONS

- |                               |   |  |
|-------------------------------|---|--|
| 1 Lesson Meeting Place        | 7 Rental Center Parking Lot                         | 11 Homestead Parking                       |
| 2 Race Start                  | 8 Brule Lodge Parking                               | 12 Cross Country & Snowshoe Trail Entrance |
| 3 Snowmobile Trail            | 9 Bus Parking & Overflow Lot                        |  |
| 4 Whitewater Snow Tubing Area | 10 Snowshoe/Cross Country & Fat Bike Trail Entrance |  |
| 5 Homestead Snow Tubing Area  |   |  |
| 6 Big Bear Parking Lot        |   |  |

## Additional Information

**Facility Pass:** Available at Guest Services, Rental Center, Bear's Den Pro Shop and Lodging Office.

**Days of Operation\*:** Days Of Operation: 9am-4pm (target opening 11/11). Open Fri.-Sun. in Nov. & 11/24-11/27. Open Fri.-Sun. 12/2-12/18 & Daily 12/23-1/2. Open Thurs.-Sun. 1/5-4/9, Open 1/16 & 2/20. Open daily 3/20-3/26. Open Sat. & Sun. 4/15-closing. Operational schedule subject to change.

**Night Session\*:** Lower Sunrise, Rapids, Bambi and Bunny are open for night sessions. Served by Fast Track Pony Handle Tow and Bambi Rope Tow. Chairlift and T-Bars do not operate for night sessions. Available Fri., Sat., and nightly 12/26-1/1/23. Target opening 12/26. \* Schedule may vary

# 2022/23



# Events

Event Details At [www.skibrule.com](http://www.skibrule.com)



11/11	Target Opening
11/24-11/27	Thanksgiving Race Camp
11/24	Thanksgiving Dinner
12/9-12/11	CMSC Clinic & Race
12/31	New Year's Fireworks
12/31	New Year's Dinner & Activities
1/5-1/8	Salute To Troops
1/7	Venturing & Family Day
1/12-1/15	Teacher Appreciation
1/19-1/22	Fireman Appreciation
1/21	Cub Scout Day
1/26-1/29	Law Appreciation
1/28	BSA Winter Merit Badge

2/2-2/5	Union Week
3/18-3/19	USSA Brule Finale Race
3/16-3/26	College Special
3/25-3/26	Brule Bash
3/30-4/2	Scrubs Week
4/1	BSA Winter Merit Badge
4/8-4/9	Easter Events
4/9	Easter Brunch & Egg Hunt
4/16	\$80 Carload Day

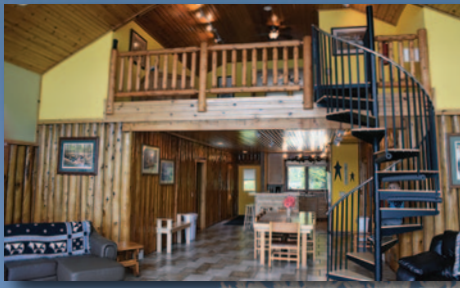
**Gold Medal Ride  
With Nick Baumgartner**  
Ride dates at  
[www.skibrule.com](http://www.skibrule.com)

*"To be able to bring the gold medal home has been so emotional. I got a hero's welcome, thousands of people in the streets for 60 miles to my house, following fire trucks, ambulance, city workers, all these people that have been there to support me. This is a dream come true, and the U.P. is shining gold right now."*

*~ Nick Baumgartner*







# Brule Village Lodging At



## Winter Lodging

	Max # Guests/Night	Bedrooms	Twin Beds	Full Beds	Queen Beds	Twin Daybed w/ Trundle	Bathrooms	Loft Sleep Area	Hot Tub	Sauna	Fireplace Type	Allows Pets \$35/nite	Chatties Connect Interiorly	Amenities/Condition Rating	Nightly Rate 11/1-4/30	Holiday Nightly Rate (Dec. 24 - Jan 1)	Summer Nightly 5/1-10/31	Summer Weekly	Summer Monthly Starting At
Anderson Lake	16	6	4	3	2	1	4	Y	P	Y		Y		5	\$670	\$780	\$670	\$4,690	N/A
Beaver Lodge Top	8	3	3	3	0	0	1.5	Y	P	Y	GF	N	Y	3.5	\$400	\$480	\$250	\$1,500	\$2,430
Beaver Lodge Btm.	6	2	3	1	0	0	1.5		P	Y	GF	N	Y	3	\$300	\$375	\$175	\$1,050	\$1,625
Big Bear Top	8	3	2		3	0	1.5		P	N	FP	Y	N	4	\$400	\$480	\$250	\$1,500	\$2,430
Big Bear Btm.	6	2	2	1	1	0	1		P	N	GF	Y	N	3.5	\$300	\$375	\$175	\$1,050	\$1,625
Heaven's Window	10	4	2	2	1	1	2	Y		Y	WS	Y		4	\$490	\$570	\$250	\$1,500	\$2,430
Pioneer 103	6	3	2	0	2	0	3		S	N	GF	N		4	\$300	\$375	\$175	\$1,050	\$1,625
Pioneer Suites	4	1	0	0	1	1	1		S	N	GF	N	Y	3.5	\$215	\$240	\$150	\$ 900	\$1,200
Pioneer Elite	4	0	0		1	1	1		S	N		N	Y	3	\$145	\$170	\$125	\$ 750	\$ 975
Pioneer Standard	4	0	0		1	1	1		S	N		N	Y	3	\$135	\$160	\$100	\$ 600	\$ 891
Safari House	20	5	4	1	6		3.5				GF	N		4	Rates vary by date, call for specific rates				
Woodlands Top	10	4	6	1	1	0	2		P	Y		Y	N	3	\$400	\$480	\$250	\$1,500	\$2,430
Woodlands Btm.	6	2	2	1	0	0	1		P	Y		Y	N	2.5	\$275	\$325	\$175	\$1,050	\$1,625

Prices/Rates/Amenities Subject to Change. Anderson Lake and Safari House: Not located in Brule Village. Star rating is based upon a combination of amenities (sauna, hot tub, # of bedrooms/bathrooms, single standing vs. duplex, kitchen) and overall property condition. Min. age 25 to rent.

S - Shared Hot Tub WS - Wood Stove FP - Wood Fireplace P - Private Hot Tub GF - Gas Fireplace

## Lodging Specials & Packages at [www.skibrule.com](http://www.skibrule.com)

**Reservation Information:** Units have microwaves, TV, phone, cookware, plates, glasses, linen, coffee maker, bedding & towels. Management reserves the right to change booking to a comparable size unit. Listed rates are based on maximum capacity. Rates subject to change. Deposits: 50% of total due at time of booking & balance due 10 days prior to arrival. **Cancellation:** deposits are refundable less a \$50 cancel fee if cancelled 30 days prior to arrival. Less than 30 days, no refund on deposit. No refunds due to weather. Moving Reservations: reservations can be moved to another unit or date if done 30 days prior to arrival, no changes less than 30 days. Anderson Lake summer reservations cannot be modified once booked. **Security Deposit:** An authorized credit card is required for damages. **Misc. Info:** 25 yrs of age is min. to rent, drivers lisc. Required for check in, Check-in 4:00 / Check-out 10:00. \$20/key fee for keys not returned. **Nightly Min.:** 2 night min., Anderson - 3 night min. & 5 night min. summer, Pioneer 1 night min. non holiday midweek. Call for specific min. 11/24-11/27 & 12/24-1/1. **Pet Fee:** \$35/pet/night. Undeclared pets \$40/night/pet & \$70 clean fee. Brule Village is within walking of the slopes and shuttle service is available except at Anderson Lake Lodge and Safari House which is located 15 min. from slopes. Rates & dates subject to change.

Lodging Photos & Tours At [www.skibrule.com](http://www.skibrule.com)



# Gear Up For Fun!

## The Ski Brule Rental and Tech Center

Avoid the hassle of transporting gear you rented somewhere else by renting equipment at Ski Brule. Ski Brule Rental Center offers skis, snowboards, blades, boots, poles, helmet, snowshoes, fat tire bike & cross country equipment for your winter adventure. It is a one stop for it all; equipment, information, lift tickets, booking lessons, lockers, rest rooms, tech services & apparel. And of course, helpful, friendly service with a smile!

Having well-tuned equipment is essential and will give you confidence as you engage a turn. Properly tuned gear will hold firmly underneath as you carve down the slopes. Get a tune up at the Tech Center to make your day more fun!

Rental & Tech Shop Rates	Rental Rates Single Discounts only	Ski/Snowboard, Boots, Helmet, Poles		Helmet	Equip. Switch Type	Nordic Set	Snowshoes	Snowskates, Poles, Boots, Helmet	Night Rental	Add Night Rental to Day	Friends & Neighbors Rental Discount	Fat Bike*	Multi Day Rental	Kids Sun. Friends & Neighbors Rental**
	Adults & Juniors	\$45	\$10	\$6	\$38	\$18	\$45	\$39	FREE	5% Off	\$30 Half Day \$50 Full Day	\$3 Off for each add'l day	N/A	
	Kids	\$29	\$10	\$6	N/A	N/A	N/A	\$26	FREE	5% Off	N/A		\$15	
	Tech Shop	Hot Wax	Sharpen Edges		Binding Check or Adjustment			Full Tune	Mount Bindings	Restorations				
		\$13	\$23		\$7			\$36	\$36	\$59				
The Tech Shop is located at the Rental Center at Ski Brule. The tech center will only mount skis purchased at Bear's Den Pro Shop.														

### Timesaver Tips:

Avoid the rental rush by renting your gear Fri./Sat. 5:30-7:30 & 12/26-1/1 for the next day.

Rental forms are available at [www.skibrule.com](http://www.skibrule.com) - print & complete prior to arrival.



## Bear's Den Pro Shop

The only thing standing between you and the best day on snow is your gear! Everything you need is at Bear's Den Pro Shop & at affordable prices. Apparel & gear from Smartwool, Scott, K2, Marker, Five-Forty, Spy, Swix, Turtle Fur & Killtech plus knowledgeable staff will make your day perfect. Open 8-4:30 and until 7:00 on night session evenings.

**\$599 Ski Package &  
\$450 Snowboard Package**



**Complete Rental Forms In Advance: [www.skibrule.com](http://www.skibrule.com)**





# It's About Snow

*If it has to do with winter, it's at Ski Brule!*



**Silent Sports:** Ski Brule has 23 km of tracked and flat groomed trail systems for snowshoeing, cross country skiing & fat biking. Circling the base of Brule Mountain, the trails offer glimpses of the Brule River and wildlife. The trail system is in a series of loops that make options for a whole day adventure or short trek on the wooded and rolling terrain, making for another fun adventure at Ski Brule. Your daily lift ticket includes access to the trails.



## Snowmobile The U.P.

Have you considered a snowmobile and ski vacation to Ski Brule? The Upper Peninsula and Northern Wisconsin trail systems lead to Ski Brule. That combined with trailer parking, lodging, dining, and activities, makes Ski Brule the location for your next snowmobile get-a-way.



Iron County Snowmobile system is well known for both wide open trails and scenic journeys through the woods with over 500 miles in Iron County alone.

## Whitewater Snow Tubing

The Whitewater Snow Tubing Park is definitely a ride on the wild side! Available 1-3:00 on Saturdays and Sundays starting 1/7 and daily 12/26-1/2. Whitewater Snow Tubing is another way to enjoy all that winter offers. \$10/5runs.





# Group Trips!

## *The More The Merrier!*

### **Why take a group trip?**

Groups of twenty or more save on resort amenities and lift tickets and are custom made for your group.

The benefits to group trips go beyond cheap lift tickets. Group trips are convenient because the group coordinator makes the arrangements so all you must do is jump on the bus. It's also a great way to meet people that also like snowsports. The number one reason for a group trip to Ski Brule is that it will be an amazing trip with friends.

*To qualify for group rates: min 20 ticket purchased, one payment for entire group and advanced reservation required*



### **Snow How Ski Youth Group:**

\$32 ticket, ski lesson, ski rental & lunch.\*

### **Saturday Group Trips:**

\$51 ticket only, \$61 ticket/rental combo.

### **Sunday-Friday Group Trips:**

\$40 ticket only, \$50 ticket/rental combo.\*\*

Group rates exclude 12/24-1/2, reservations required.



\* Snow How is for ages 10-17 & their chaperones, available Thurs./Fri., 1/16, 2/20 & 3/20-3/24.

\*\* Available non holiday Sun./Thurs./Fri./ 1/16, 2/20 & 3/20-3/24. More Information At: [www.skibrule.com](http://www.skibrule.com)



**More information At: [www.skibrule.com](http://www.skibrule.com)**



# **krist** Fueling Your Adventure

- *Save \$15 On Lift Tickets*
- *\$55 Each At Select Krist Locations Through 12/24*
- *Valid Anytime In 2022/23*
- *Download Krist Rewards App & Get Free Fuel At Krist*

## **krist**

Your Northwoods Neighborhood Store In Michigan, Wisconsin & Minnesota. Visit [www.kristoil.com](http://www.kristoil.com) for locations & to sign up for Krist Rewards.

## **YES, IT'S TRUE! FREE **krist** FUEL With The Krist Rewards App!**

*#FuelingYourSkiBruleAdventure*

*"I Don't Care What Gas Costs. I'm Still Riding Ski Brule. Save \$15 On Lift Tickets & FREE Fuel At Krist!" ~ Nick*

Save \$15 on tickets at Krist Oil & get FREE FUEL coupons through Krist Rewards App 11/1-3/31.

*\*Management reserves the right to modify, alter, or cancel any promotion at any time. View all terms and conditions at [www.kristoil.com](http://www.kristoil.com)*



## **krist**

**Proud Sponsor of  
Olympic Gold Medalist  
Nick Baumgartner.**



Available on:



App Store



Google Play

**Buy At [www.skibrule.com](http://www.skibrule.com)**





397 Brule Mountain Road  
Iron River, Michigan 49935  
[www.ski-brule.com](http://www.ski-brule.com)

*"I've seen some of the most beautiful views in the world, and I'm telling you, the Upper Peninsula of Michigan is the most beautiful thing I've ever seen."*

*~Nick Baumgartner*

Nick's Olympic dream began on the slopes at Ski Brule. Years of determination & hard work brought GOLD back to Ski Brule. Congratulations Nick!

