

# Your Favorite Snow Resort!

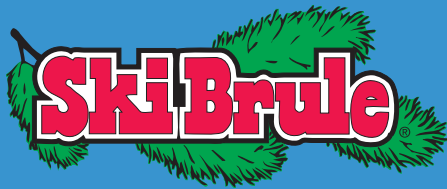
## *2019/20 Travel Planner*



***The #1 Family Resort  
Affordable Family Fun  
Best Snow Conditions***

**1-800-DO-BRULE • [www.skibrule.com](http://www.skibrule.com)**  
**397 Brule Mountain Rd., Iron River, Michigan**

# Welcome to



George (Ski Brule's original founder) made a promise over 60 years ago to provide "quality family fun at an affordable price". His promise has been kept plus Ski Brule added the promise to be "the friendliest, most outgoing, helpful resort with a variety of activities for families with mixed recreational interests". These promises are the reason so many choose to spend their family time at

Ski Brule creating lifetime memories.



**Why Choose Ski Brule?** *"We travel to Ski Brule annually. The staff at Ski Brule go above and beyond to accommodate your needs! Lisa, thank you for helping us out and reassuring us everyday - recommendations on dining, rentals, lodging or just great conversation. Thank you for your kindness you showed! Eddie at Homestead - great job serving & drinks. My little girls just adored you! Thank you for making us feel so comfortable and being part of the great experience. Carley at SKIwee - what a great experience every time with you! Dante at Rentals - great time with you and our son Brock! Steve - thank you for directing us in the right direction every time! All of the staff we encountered were great! Ski Brule really is a 'family friendly resort'. The BBQ is a must with a sleigh ride up the hill, an outstanding meal and sledding after! The lift guys too! Thank you for assisting our 5 & 6 year old getting onto the lifts as it freaks me out every time!" ~Fred, Crivitz, WI*



1-800-362-7853

[info@skibrule.com](mailto:info@skibrule.com)



# The Best Snow

**Ski Brule will provide the best conditions at all times. Ski Brule will be the first to open with the longest season in the region.**

The 'never quit' approach of the Ski Brule Mountain Crew has made this promise a reality. As soon as temperatures drop (even as early as October), Ski Brule starts making snow to ensure being the first to open. It's the powerful snowmaking system combined with over 60 years of snowmaking and dedicated snowmaking crew that makes skiing in October and May a reality.

**Target Opening: Nov. 8**

**Opening Friday  
Tickets Are FREE!**

*"The snow crew is second to none, hands down. They not only know how to make it, they know how to manage it! Their snow management keeps it in the best shape of anywhere in the Midwest. They approach it as an art, much like a brewmaster looks at making beer." ~ Jason*

Don't worry about what it looks like in your backyard because you can always count on Ski Brule for fantastic snow. Ski Brule has opened as early as October 24 and remained open as late as May 15! You can count on six months of snow at Ski Brule with the best conditions.



**Under ideal conditions,  
Ski Brule can open a  
trail with 24 hours  
of snowmaking.**

Not all snow is made equal. Snowmaking and grooming is truly a science. It is years of experience, trade secrets and passionate approach that makes Ski Brule's snow the best there is. It is impossible to tell the difference between 'Brule Made' and 'Mother Nature' made snow.

Don't worry about what it looks like in your backyard because you can always count on Ski Brule for fantastic snow. Ski Brule has opened as early as October 24 and remained open as late as May 15! You can count on six months of snow at Ski Brule with the best conditions.



# Is Your Resort

*"We want to shout from the mountain tops how much we love #skibrule! Let me share some of the perks & why we love them so much!!*

*FANTASTIC people who work there! They are SO incredibly accommodating and truly promote passion for the sport, everyone deserves a fun time at Ski Brule!*

*Chairlifts with great operators that know exactly how to help little ones enjoy the sport too.*

*Which leads me to number three, a super fun, family orientated experience for all levels of skiers/boarders! So much fun!"*

*#skibrulelifers4life #cantescapethesnow #sowhynotloveit ~ Trisitn*



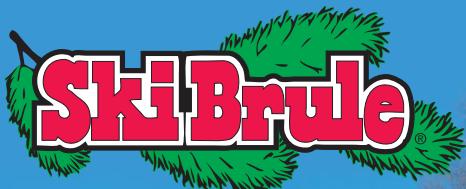
## The Midwest's #1 Resort!

- Friendliest Resort Anywhere
- Onsite Accommodations
- Family Fun Activities & Events
- First To Open & Longest Season
- Best Conditions In Region
- Everything In Winter Sports
- #1 Children's Programs
- Best Value On Snow





# Deals and Specials



*"Everyone was outstanding and so willing to assist in making sure we had a great first ski vacation. My teenage children wanted to learn to snowboard. Kyle was a great instructor and very patient. My husband and I took lessons with Betsy. She was a great skier and very patient. Everyone went out of their way to make sure we had a great time. We loved staying at Pioneer Lodge because it was so close to the slopes. We will definitely be back" ~Ellen*



## Save More, Play More!

\$22 Youth Group Trip  
\$45 Advanced Lift Tickets  
FREE Kids Tickets!  
\$3 Off Tickets Seniors & Military  
1/2 Price Tickets Wednesday  
Sunday \$10 Kids Rental  
FREE Tubing Sunday  
\$58 Wednesday Special  
\$50 Lift & Lodging Special



### Whitewater Snow Tubing

1-3:00

Sat. & Sun.



\$25 Off Lodging Spring Break Special  
FREE Mac & Cheese Kids Lunch Sunday  
\$52 Family Homestead BBQ Dinner  
\$5 Off Tickets Mon./Tues./Thurs./Fri.  
\$37 Saturday Group Tickets  
\$26 Sunday-Friday Group Tickets  
1/2 Price Costume Tickets Brule Bash  
*Limitations and restrictions apply.*

#skibrule

#906winter





# Kids Are Priority



**Kids Ski FREE**  
**Kids \$10 Rental Sunday\***  
**Kids Tube FREE Sunday\***  
**Kids FREE Lunch Sunday\***

## Kids Center

Open 8:30

AM Session	9-12:00
Lunch Session	12-1:00
PM Session	1-4:00

### SKIwee & Childcare

1 Session	\$44
2 Sessions	\$71
2 Sessions & Lunch	\$82
Lunch	\$17



### Equipment Rental

1 Session	\$21
2 Sessions	\$24

### Minimum Age

SKIwee	4 Years
Childcare	1 Year

**SKIwee:** Start your kids on snow in the best children's program around. Ski Brule's SKIwee program is 3 hours on and off the snow, where children are introduced to skiing in a fun environment. Because let's face it, if your child isn't having fun, they won't participate. Children learn about their equipment, walking, sliding, riding the tow rope, stopping, carrying their gear (so you don't have to), and how to get up after a fall. Smiles all around when you watch the children ski, play on the slides, bounce houses, hot chocolate, face painting and more!

*"Spencer is outstanding! Because of him, my twins are now skiers! Everyone was so helpful and friendly in the Kid's Center. It made their first time a wonderful experience." ~ Karyn*

**Childcare:** Not ready for the slopes or in need of time off the snow? Childcare at the Kid's Center is available for children ages one & up with sessions filled with activities; arts & crafts, face painting, STEM activities, story time and outdoor fun (dependent on children's ages / weather).

\*not valid 12/24-1/5, Kid's Age 0-9



@skibrule

info@skibrule.com





# #1 Children's Resort

*"Ski Brule is truly a resort experience. There is so much to do, we couldn't fit it all in. The staff was very helpful and friendly. The lodge was well kept and easy to walk place to place. The views were wonderful too! The kid's lessons were great. The girls learned to ski and will be lifetime skiers. They had so much fun that I had to sign them up for the afternoon SKIwee instead of skiing with us!"*

*~ Jayme*



## **Snowboard Lessons, Advanced Ski Lessons & Lessons For Kids Under 4 Years Of Age:**

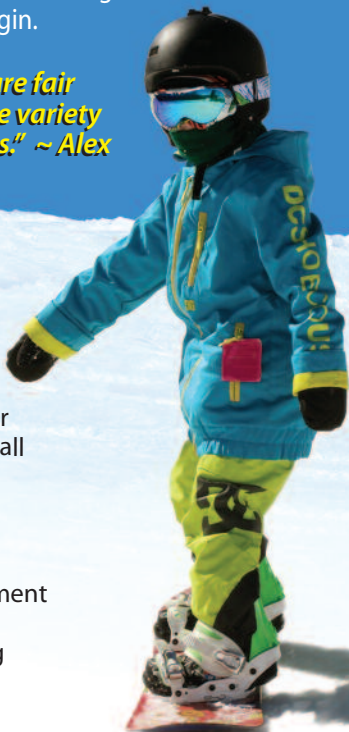
Children's one or three hour private are available daily. Advanced reservations are recommended (space is limited) by calling 1-800-362-7853. Lessons may also be booked upon arrival at Guest Services. Lesson times are 9:30, 10:45, 12:00, 1:15 & 2:30. Private: 1hr: \$55, 3hr. \$165

**Is your child ready to ski?** As soon as they are balanced on their feet and show interest in learning. There is no 'magic' age to begin.

***"Great Resort! Prices are fair for the value and a nice variety of activities for the kids." ~ Alex***

The Kid's Center (adjacent the Rental Center) offers three, six and seven hours (including lunch) of fun. Advanced reservations (min. 24 hours) are required for Monday-Friday (non holiday) and early/late season. Call 800-362-7853 to reserve SKIwee and childcare.

**TIMESAVER TIP:** Rental forms and SKIwee/Childcare enrollment forms are available at [www.skibrule.com](http://www.skibrule.com). Save time and complete prior to arrival. Rental equipment is available at the Kid's Center for children enrolled in SKIwee. Equipment can also be picked up the evening prior at the Rental Center.



# Homestead Lodge At

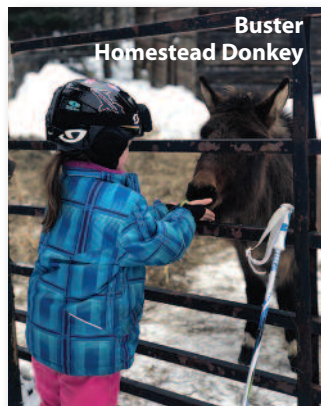
# Ski Brule



The restored mid-mountain Homestead Lodge was built in the 1800's by the Oberg family. Homestead Lodge is decorated with antiques and farm implements that were used to work the land on which it sits. A visit to Homestead Lodge for lunch or warm up by the antique pot belly stoves for a one of a kind experience.

*"Best in the Midwest. In terms of variety of slopes, this is true (and I am saying that as a regular skier in the Midwest for the past 18 years). The resort has a rustic flavor. Their Homestead lodge is a great place to eat. The pulled pork is out of this world. Slopes are well prepared."*  
~ Tim

The scent of burgers, brats and pulled pork cooking on the grill means it is lunchtime at Homestead Lodge. Pull up a seat on the sunny Homestead deck and feast on a burger as you tell tales of the day's adventures.



1-800-362-7853

[www.skibrule.com](http://www.skibrule.com)



# BBQ Dinner, Sleigh Ride & Tubing



## Homestead BBQ, Tubing & Sleigh Ride:

5-8:00 on Saturdays and 12/26, 12/28, 12/30

**BBQ Dinner:** Adult \$15, Junior \$11, Kids \$9,

Family\* \$52 \*Family includes 2 adults &  
up to 4 dependent children ages 17 & under.

Homestead BBQ dinner, sleigh ride and tubing are on the 'must do' list during your visit to Ski Brule. The experience of riding the free sleigh to the rustic mid mountain Homestead Lodge, feasting on Ski Brule's famous all you care to eat dinner, singing along with the live music and traditional hike up hill style snow tubing will only be found at Ski Brule. The dinner is second to none and features Ski Brule's famous pulled pork, barbecue chicken, baked beans, sauerkraut, salad, mashed potatoes, gravy, apple sauce, rolls, cake and beverage. Dinner tickets are available at the Lodging Office, Guest Services and Bear's Den Pro Shop.



**Tubing At Homestead BBQ:**  
5-8:00 \$5/Person, Unlimited Rides.

*"There is a great variety of runs here for all levels of skiing and this resort is family friendly. On a break, I went to the Homestead for a cookie and hot chocolate. What a sweet old building!! Live music was playing and lots of people were enjoying the fireplaces, beverages, and food. Before leaving I visited the gift shop and found a large amount of merchandise to choose from. Great shop to buy a replacement*

*for something you forgot at home too. Ski Brule has a great overall atmosphere and in a scenic out-in-the-woods location away from town. You get the feeling of being far away from home while here on vacation."* ~ Shannon



# ride the best!

As the saying goes 'if you build it, they will come'. And riders from all over the Midwest come to Ski Brule because of top quality parks. Ski Brule Park crew has built three parks designed for riders to have a progressive system of features for learning and developing skills. Smaller boxes, wider rails and jumps that start off small and increase in size for riders as they increase their skills. Diverse terrain with varying pitches that wind through wooded terrain give that 'mountain experience' in the Midwest. Bambi Rail Playground, Rapids and Snowshoe parks are modified throughout the season to keep the parks fresh and interesting.



**Mark Your Calendar**  
**Target Opening November 8**  
**Opening Friday Lift**  
**Tickets Are FREE!**

*"I went to Brule today. Conditions were beautiful. Sunny and the park was in perfect shape. Kudos to the park crew! The resort is very well run and it shows that they care about putting out a quality product."*

*~ David*



**Fax: 906-265-6227**

**[www.skibrule.com](http://www.skibrule.com)**



# 30 ACRE TERRAIN PARK

## Rapids, Snowshoe and Bambi Playground

Mornings are very busy at Ski Brule. The Park Crew is putting the finishing touches on the park to ensure the best terrain and features are found at Ski Brule. The three terrain parks offer an array of features for wide range of abilities. The playful turns, switchbacks and berms on Timber Doodle and Double Doodle are sure to put a smile on your face. If it's a corduroy groomer you prefer, the Ski Brule grooming staff is the best there is!



3 Terrain Parks  
2 Terrain Trails  
Restructured Weekly  
Features For All Abilities

*"Everyone is so helpful and friendly. Been going to Ski Brule for years and we've never had a bad day! The conditions are always fantastic and this year we got an extra treat of 8" fresh snow overnight. We rode from lift start to end." ~ Brian*

### Want to ride more?

Night session is available Friday,  
Saturday and nightly 12/26-12/31,

4:30-7:30 and includes Rapids Park, Bambi Rail Playground,  
Bunny & Lower Sunrise, serviced by Bambi Rope Tow and  
Pony Handle Tow. Your day pass includes the night session.



1-800-DO-BRULE



# Bear's Den Pro Shop



## The Bear's Den has The BEST Prices!

Everything you need to make your day even more enjoyable is at the Bear's Den Pro Shop. Great prices and the knowledgeable, friendly staff will have you ready for the slopes. Gear & apparel from Smartwool, Marker, 540, Scott USA, SPY Optics, Swix and more!

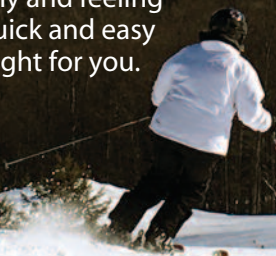
Bear's Den Pro Shop is open daily 8:00 a.m. - 4:30 p.m. and until 7:30 Friday, Saturday and 12/26 - 12/31. Bear's Den is dedicated to making your day on snow perfect, including making it easy on your wallet.

## \$549 Ski Package

technology in skis will have you turning effortlessly and feeling in control. Buying at the Bear's Den Pro Shop is quick and easy with educated staff that will find exactly what is right for you.

**Try Them Before You Buy!**  
**FREE One Hour Ski Demo**

**Includes skis, boots, poles, binding and mounting!** Your own complete ski package will make your days on snow amazing! Comfortable boots that don't hurt your toes or calves and are warm! Imagine warm toes while skiing, sounds wonderful! Plus the latest



*"We have come with our family, which range in age from 2-16 years old, for the past 6 years and will continue to come. The staff is always super friendly and helpful. Ski Brule is the place to bring your family for a great ski adventure." ~ Jordan*



## \$415 Snowboard Package

**Includes snowboard, boots, bindings, leash & mounting!**



1-800-362-7853





# Equipment Rental & Tech Center



Let the Ski Brule Rental Center get you geared up for a great day on the slopes. Skis, boots, snowboard, helmet, cross country, snowshoes and fat tire bikes are available for your winter adventure. Plus a friendly staff that is ready to make your visit perfect.

The Rental Center is one stop for it all; equipment, information, lift tickets, lessons, lockers, rest rooms, apparel and snacks.

Equipment repairs and tunes will make your day on snow even better!  
A great tune is the difference between a good day on snow and a great day!

Specializing in children, the Ski Brule Rental Center provides one on one children's ski and boot fitting. This extra attention is very important when you are starting your children on snow. Join Friends & Neighbors and receive a 5% rental equipment discount, plus \$10 kids rental on Sunday.\*

*"My family has a great time whenever we visit! Everyone has something to do - ski, cross country, tubing, snowshoe, bike or sit by the fireplace & relax" ~ Jen*

Rental & Tech Shop Rates	Rental Rates Single Discounts only	Ski/Snowboard Rental Package***	Helmet	Equip. Switch Type	Nordic Set	Snowshoes	Snowskates, Poles, Boots, Helmet	Night Rental	Add Night Rental to Day	Friends & Neighbors Rental Discount	Fat Bike**	Multi Day Rental
	Adults & Juniors	\$38	\$10	\$6	\$38	\$18	\$38	\$19	FREE	5% Off	\$30 Half Day \$50 Full Day	\$3 Off for each add'l day
	Kids	\$24	\$10	\$6	N/A	N/A	N/A	\$21	FREE	5% Off	NA	
	Tech Shop	Hot Wax	Sharpen Edges	Binding Check or Adjustment		Full Tune	Mount Bindings	Restorations				
	\$12	\$22	\$6		\$33	\$33	\$55					
Ski Brule Technicians are certified to work on Marker and Salomon bindings. The Tech Shop is located at the Rental Center at Ski Brule. ***Package includes: skis/boots/poles/helmet or snowboard/boots/helmet.												

**Timesaver Tip:** Avoid the rush by renting your equipment 12/26-12/30, Friday or Saturday night 5:30-7:30 for the next day.

\*Excludes 12/24-1/5, requires one ticketed adult. Single discounts only. \*\* Fat tire bikes are not permitted on alpine trails and helmets are required.

Complete Rental Forms In Advance: [www.skibrule.com](http://www.skibrule.com)



# start a lifetime sport & have the time of your life

Skiing & snowboarding truly are lifetime sports that can be enjoyed from the time you start walking to the time you have had many years of fun. Snowsports are not only heart healthy but are a sport your entire family can enjoy together and you are outside enjoying winter instead of complaining about it.

From 'first timers' to advanced lessons, Ski Brule will have you traversing the slopes in no time at all. Lessons are available daily and reservations are encouraged by calling 1-800-362-7853. Let the professionals at Ski Brule make your experience memorable.

## **Snow School Lessons:**

Daily: 9:30, 10:45, 12:00,  
1:15 & 2:30

### **Private:**

1 hr. \$55, 3 hr. \$165

### **Semi Private:**

1 hr. \$45/prsn., 3 hr. \$130/prsn.

Two or more people of similar age (10 & up) & ability that would like to learn together.

### **Group Ski:**

1 hr. \$25/prsn.

4 or more adults of similar ability.



## **\$58 Wednesday Special**

Includes:  
lift ticket,  
ski lesson  
& ski rental.

**Lesson Times:**  
Beginner 10:45  
Advanced 1:15.

Available for  
ages 10 & up.



**1-800-DO-BRULE**

**906-265-4957**



Tatry Ski Club



# Group Trips

## More Fun, Big Savings!

*"Awesome job! Excellent supportive and helpful staff. We have been doing this group trip for a number of years and this year was the best yet! Thank you so much for your helpfulness, cheerful attitude and super service!" ~ Alan*

Ski Brule is the destination for your group trip this season. Groups of twenty or more save throughout the resort on packages that are custom made for your group. There are so many benefits to group trips that go beyond discounted lift tickets. Group trips are convenient for starters. The group leader makes all the arrangements, so you only need to get on the bus and let the fun begin. It's the best way to meet people that also like snowsports. And the number one reason for a group trip to Ski Brule ... because you know you will be smiling throughout the trip.

To qualify for group rates: min. 20 ticket purchased, one payment for entire group. Snow How is for ages 10-17 and their chaperones, reservations required, not available 11/27-11/29, 12/24-1/5, 2/14, 2/18.

\*Not valid 12/24-1/5.



**Snow How Ski Youth Group:** \$22 lift, ski lesson, rental & lunch Mon-Fri.\*

**Saturday Group Trips:** \$37 ticket only, \$48 ticket/rental combo.\*

**Sunday-Friday Group Trips:** \$26 ticket only, \$37 ticket/rental combo.\*

**Overnight Group Lodging Trips:** Starting at \$130/person for two nights lodging and two day lift ticket.



@skibrule

info@skibrule.com



# BRULE AREA



## HOMESTEAD AREA

### BUILDINGS

- A** Homestead Lodge
- B** Brule Lodge, Café, Saloon, Bear's Den Pro Shop, Guest Services & Lodging Office
- C** Rental Center & Tech Center
- D** Kid's Center
- E** Ski Patrol
- F** Top of Hill Ski Patrol
- G** Homestead Ski Patrol
- H** Pioneer Lodge
- I** Race Competition Center
- J** Acrobag

### Facility Pass Rates & Discounts

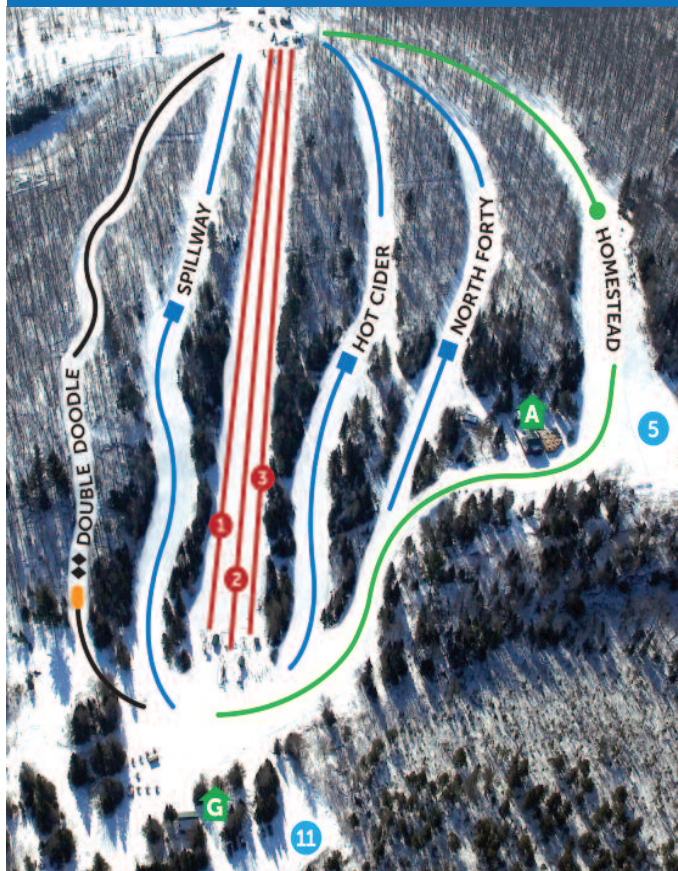
Facility Pass Rates	Daily Ticket 9-4:00	Friends & Neighbors Mon./Tues. Thurs./Fri.*	Friends & Neighbors Wed.*	Night Ticket 4:30-7:30**	Add Night Ticket to Day Ticket	Snowshoe Ticket	Nordic Ticket	Homestead Tubing	Whittewater Tubing 5 Runs	Fat Bike Trails
Adults (18+)	\$55	\$50	\$27.50	\$10	FREE	\$6	\$11	\$5	\$6	\$16
Juniors (10-17)	\$48	\$43	\$24	\$10	FREE	\$6	\$11	\$5	\$6	\$16
Kids (0-9)	FREE	FREE	FREE	FREE	FREE	FREE	FREE	\$5	\$6	FREE
Seniors (60+)	\$52	\$44	\$24.50	\$10	FREE	\$6	\$11	\$5	\$6	\$16
Discounts Single Discounts only	1/2 Day Ticket 12:00	1/2 Day Nordic 12:00	Multi 2 Day Ticket	Multi 3 day Ticket	Military Discount	Wed. Special Includes Lift, Lesson and Ski Rental***				
Adults	\$5 Off	\$3 Off	\$6 Off	\$10 Off	\$3 Off	\$58				
Juniors	\$3 Off	\$3 Off	\$3 Off	\$5 Off	N/A	\$58				
Kids	FREE	FREE	FREE	FREE	N/A	NA				

\*Friends & Neighbors ticket discounts excludes 12/24-1/5. \*\*Night session terrain includes Bunny, Bambi, Rapids & Lower Sunrise trails, serviced by Pony Handle Tow & Bambi Rope Tow. \*\*\* Not valid 12/24-1/5.





## HOMESTEAD AREA



## Mountain Stats

17 Trails • 11 Lifts  
150 Skiable Acres  
Longest Run: 1 Mile  
30 KM Nordic Trails  
30 KM Fat Tire Bike Trails  
33KM Snowshoe Trails

## LIFTS

- 1 Spillway T-Bar
- 2 Homestead Chair
- 3 North Forty Chair
- 4 Fast Track Pony
- 5 Snowshoe Chair
- 6 Sunrise Chair
- 7 Whitewater Tube Tow
- 8 Whitewater T-Bar
- 9 Big Bear Chair
- 10 Bambi Rope
- 11 Bunny Rope
- 12 Gentle Ben Rope

Errors or omissions subject to correction and rates subject to change.

## LOCATIONS

- |                               |                                                     |                                            |
|-------------------------------|-----------------------------------------------------|--------------------------------------------|
| 1 Lesson Meeting Place        | 7 Rental Center Parking Lot                         | 11 Homestead Parking                       |
| 2 Race Start                  | 8 Brule Lodge Parking                               | 12 Cross Country & Snowshoe Trail Entrance |
| 3 Snowmobile Trail            | 9 Bus Parking & Overflow Lot                        | Night Session Terrain                      |
| 4 Whitewater Snow Tubing Area | 10 Snowshoe/Cross Country & Fat Bike Trail Entrance |                                            |
| 5 Homestead Snow Tubing Area  |                                                     |                                            |
| 6 Big Bear Parking Lot        |                                                     |                                            |

## Additional Information

**Facility Pass:** Available at Guest Services, Rental Center, Bear's Den Pro Shop and Brule Village Lodging Office.

**Hours\*:** Lifts 9:00 - 4:00 daily & 4:30-7:30 on Fri./Sat. and nightly 12/26-12/31. Rental Center 8-4:30 daily & 4:30-7:30 on Fri./Sat. and 12/26-12/31. Bear's Den 8-4:30 daily & 4:30-7:30 on Fri./Sat. and 12/26-12/31. Kid's Center 9-4:00 daily (Mon.-Fri. by reservation).

**Night Session\*:** Lower Sunrise, Rapids, Bambi and Bunny are open for night sessions. Served by Fast Track Pony Handle Tow and Bambi Rope Tow. Chairlift and T-Bars do not operate for night sessions. Available Fri., Sat., and nightly 12/26-12/31.

**Whitewater Snow Tubing:** Available 1-3:00 on Sat., Sun. & 12/26-12/31. 5-7:00pm 12/26, 12/28, 12/30 & 12/31 and non holiday Mon., Wed. & Thurs. 5pm by reservation.

\* call ahead, schedule varies

# It's All About Snow!

**Daily:** Lift Operation 9-4:00, Kid's Programs 9-4:00 (reservations required Mon.-Fri.), Brule Café 8-4:00, Lessons 9:30, 10:45, 12:00, 1:15 & 2:30, Bear's Den Pro Shop & Rental Center 8-5:00, Hillside Dining 5-8:00.

**Friday:** *Night Skiing & Snowboarding* 4:30-7:30, Groomer Rides 5:30, Bear's Den Pro Shop & Rental Center 8-7:30, Friday Fish Fry 5-9:00.

**Saturday:** Whitewater Snow Tubing 1-3:00, *Night Skiing & Snowboarding* 4:30-7:30, Groomer Rides 5:30, Bear's Den Pro Shop & Rental Center 8-7:30, Homestead BBQ, Tubing & Sleigh Ride 5-8:00.

**Sunday:** Whitewater Snow Tubing 1-3:00, *Ski Brule Social* \*7:00

**Monday / Tuesday / Wednesday:**  
*Whitewater Snow Tubing* \*5:00

*Yellow & Italic nightly activities are free to guests of Brule Village with activity pass. \*Reservations required by 3:00 p.m. to participate. Activities will vary during holidays and due to weather. Activities subject to change. Call ahead, schedule varies.*



*"My daughter & I visited for a week.*

*Having skied nearly 50 years, I am an experienced skier*

*while my 18 year old daughter is a beginner. We had a blast! The atmosphere*

*on the slopes is very laid back and the lift operators are wonderful. We probably drove the lift operators up a wall, always talking to them but it was nice to make a connection with these fantastic people who are making sure we are all safe as we go up the mountain. For someone who is looking for a fairly inexpensive lift ticket, great snow conditions, not many people to compete with in line and awesome people who work there, then Ski Brule is the place!" ~ Sofia*



**1-800-362-7853**

**Visit us on** [\*\*facebook\*\*](#)



# 2019/20

# Ski Brule

# Events

Nov. 8 Target Opening  
Nov. 28 Thanksgiving Dinner  
Nov. 28-Dec. 1 Thanksgiving Race Camp  
Nov. 30-Dec. 1 Santa Visits  
Dec. 13-15 CMSC Race & Clinic  
Dec. 14-15 Santa Visits  
Dec. 21 Boy Scout Day  
Dec. 31 New Year's Fireworks  
Dec. 31 New Year's Activities & Dinner  
Jan. 6-12 Fireman Week



Jan. 11 Cub Scout Day  
Jan. 13-19 Teacher Week  
Jan. 18 Girl Scout Day  
Jan. 20-26 Law Enforcement Week  
Jan. 25 Boy Scout Day  
Jan. 27-Feb. 2 Military Week  
Feb. 1-2 Super Bowl Bash  
Feb. 3-9 Scrubs Week  
Mar. 2-8 Union Week

Mar. 7-8 Anniversary Weekend  
Mar. 9-22 College Weeks  
Mar. 14-15 USSA Brule Championships  
Mar. 20-22 CMSC Race & Clinic  
Mar. 23-Apr. 5 Spring Break Special  
Mar. 28-29 Brule Bash  
Mar. 28 Boy Scout Day  
Apr. 4-5 Friends & Neighbor's Weekend  
Apr. 5 \$70 Carload Day  
Apr. 6-12 \$50 Lift & Lodging  
Apr. 11-12 Easter Weekend  
Apr. 12 Easter Brunch

*"I feel like I want to spend my money at Brule with kids skiing free, ticket offers and late season offers, I find it an incredible value. We were not planning on skiing over spring break but, we felt so welcome during our first visit the whole family can't wait to go back."~ Jason*

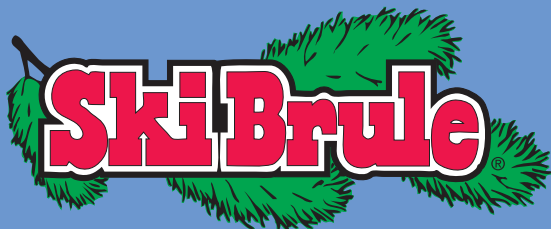
New Year's Torchlight Parade



Event Details [www.skibrule.com](http://www.skibrule.com)



# Plan, Play & Stay At



Anderson Lake



Woodlands



Big Bear



Beaver Lodge



Eagle's Nest



Cub's Den



Heavens Window



Pioneer Lodge



Timber Lodge

*"From the moment we pulled in, it was love at first sight! Every trip has made us fall more and more in love with Ski Brule. Most importantly is the staff, they are always kind, caring, passionate and patient. The slopes are always perfectly groomed. Tom at check in was excellent! Very accommodating and went above and beyond for us. It's so nice that I can afford to take our family of six for a ski weekend and not completely break the bank!" ~Max*



**Book Online at [www.skibrule.com](http://www.skibrule.com)**



## Brule Village Chalets & Condos

Chalet Name	Chalets/Condos Interconnect	Bedrooms	Bathrooms	Twin Beds	Full / Queen	Twin Daybed w/ Trundle	Hot Tub	Sauna	Fireplace / Woodstove	Gas Fireplace	Allow Pets \$25/night	Amenities/Conditions Star Rating (1-5)	Nightly Rate Includes # of Guests	Discount Nightly Rate Sun.-Thurs., Non Holiday & Open -11/28 & 3/15 to close	Weekend Nightly Rate (Fri. or Sat.)	Holiday Nightly Rate (Dec. 24 - Jan 4.)	Summer May 1-Oct. 4
Anderson Lake		6	4	4	3/2	2	P	Y			Y	5	16	\$350	\$550	\$650	\$500
Timber Lodge		4	3	2	1/2	2	P	N	2GF		Y	5	12	\$350	\$550	\$650	\$300
Cub's Den		3	1	2	2/1	2		N	WS		N	2.5	9	\$250	\$375	\$450	\$225
Beaver Lodge Top	Y	3	1.5	3	3	0	P	Y	GF		N	3.5	8	\$250	\$375	\$450	\$225
Beaver Lodge Bottom	Y	2	1.5	2	1/0	1	P	Y	GF		N	3	6	\$175	\$275	\$350	\$150
Big Bear Top	N	3	1.5	2	0/3	0	P	N	FP		N	4	8	\$250	\$375	\$450	\$225
Big Bear Bottom	N	2	1	2	1/1	0	P	N	GF		N	3.5	6	\$175	\$275	\$350	\$150
Eagle's Nest Top	Y	2	1.5	4	1/1	0	P	N	FP		N	3.5	8	\$250	\$400	\$475	\$225
Eagle's Nest Bottom	Y	2	1	0	2/0	0		N	GF		N	3	4	\$175	\$250	\$300	\$150
Heaven's Window		4	2	2	2/1	1	P	Y	WS		Y	4	10	\$275	\$450	\$550	\$250
Pioneer 103		3	2.5	2	0/2	0	S	N	GF		N	4	6	\$175	\$275	\$350	\$150
Pioneer Suites	Y	1	1	2	0/1	1	S	N	GF		N	3.5	6	\$110	\$175	\$200	\$ 99
Pioneer Elites	Y		1	0	1/0	1	S	N			N	3	4	\$80	\$125	\$150	\$ 75
Pioneer Standard	Y		1	0	1/0	1	S	N			N	3	4	\$80	\$125	\$150	\$ 75
Woodlands Top	N	4	2	6	1/1	0	P	Y	WS		Y	3	10	\$225	\$350	\$425	\$200
Woodlands Bottom	N	2	1	2	1/0	0	P	Y			Y	2.5	4	\$125	\$200	\$250	\$125

Amenities/Conditions Star Rating is based on combination of amenities (including sauna, hot tub, # bathrooms & bedrooms, single standing or duplex, kitchen) and overall condition of property. Min. age 25 to rent in Brule Village.  
S = Shared Hot Tub, P = Private Hot Tub, WS = Woodstove, FP = Wood Fireplace, GF = Gas Fireplace, GS = Gas Stove  
Prices subject to change.

### Spring Break Special 3/23-4/5

**\$25 Off Per Person, Lifts & Lodging  
Package Total. 2 Night Min., Discount Applies  
to Reg. Price Lodging and Tickets, single  
discounts based on min. occupancy of  
lodging. Call for complete details.**

### \$50 Lift & Lodging Special 4/6-4/12

**\$50/Person includes one night lodging  
and one day lift ticket, 3 night minimum stay,  
based on minimum occupancy of lodging.  
Call for complete details and restrictions.  
Limited quantities.**

**Reservation Information:** Units in Ski Brule Village have microwaves, TV, phone, grills, kitchens equipped with cookware / plates / glasses & linen. Management reserves the right to change booking to a comparable size unit. Listed rates are based on maximum rate including children. All rates subject to change. **Deposits:** 50% of the total fee is due at the time of reservation. **Cancellation:** Deposits are refundable, less \$50 handling fee, if cancelled 30 days prior to arrival. No refunds if less than 30 days. No refunds due to weather. **Moving Reservations:** Can be moved to another unit or date if done more than 30 days in advance. Reservations cannot be moved if less than 30 days. Anderson Lake Summer reservations cannot be changed/cancelled. **Final Payment:** Holiday reservation balance due 10 days prior to arrival, all others upon arrival. **Security Deposit:** An authorized credit card is required prior to check in against damages or loss. **Misc. Info:** Min. 25 years of age to rent. Driver's license required at check in. Check In: 4:00 p.m., Check Out: 10:00 a.m. \$20 Fee/key not returned. **Nightly Minimums:** Weekend 2 night Friday/Saturday. Timber Lodge, Anderson Lake: 3 night min. Anderson 5 night min. summer and balance due 30 days prior to arrival. Call for specifics on holiday min. including 11/27-30, 12/24-1/4, 1/17-20, 2/14-17. **Pet Fee:** \$25/pet/night. Undeclared pets \$40/night plus \$70 clean fee. Brule Ski Village is within walking distance of the slopes and has Shuttle Bus service to the slopes. Anderson Lake Lodge is located 15 miles from Ski Brule (no daily maid service or shuttle service). Rates and dates subject to change.

**397 Brule Mountain Road, Iron River, Michigan 49935**



# Pioneer Lodge

At **Ski Brule**

Fantastic views and convenience are two of the many reasons Pioneer Lodge Condos are the most popular lodging at Ski Brule. Located across from the Brule Main Lodge and the slopes, Pioneer Lodge Condos are ideal for families and large groups.

## Winter Nightly Rates Starting At:

Studio	4 guests	\$80
1 Bedroom	6 guests	\$110
3 Bedroom	6 guests	\$175

## Summer Nightly Rates Starting At:

	Nightly	Monthly
Studio	\$75	\$550
1 Bedroom	\$99	\$650
3 Bedroom	\$150	\$1,200



Studio, 1 Bedroom & 3 Bedroom Condos



New Year's Fireworks View from Pioneer Lodge

*"Ski Brule is awesome! It was the kid's first time skiing and everything went so smoothly. They are so accommodating and professional. Stayed at Pioneer Lodge which was ideal because it was across the street from the Kid's Center. We watched the kids in their lessons while we sipped coffee on the condo's deck. PERFECT!" ~ Jane*

Pioneer Lodge features 16 condos (5 - one bedroom, 10- Studio & 1-three bedroom) that can accommodate groups of up to 76 guests. Call Ski Brule to book your group ski and snowboard trip. Incredible group rates for groups of 20 or more.



**397 Brule Mountain Road, Iron River, Michigan 49935**





# Brule Saloon & Hillside Dining

Dining & Drinks Served Daily  
Lunch Menu Weekends & Holidays  
Steak, Salad, Burgers Wraps & More  
Drink & Dinner Specials  
Entertainment Most Weekends

## Friday Fish Fry

Friday "Up North" Style Fish Fry  
Perch, Cod & Shrimp Dinners  
Serving 5-9:00 Friday



## BEST VIEWS OF THE SLOPES

*"The Friday Fish Fry is definitely the best fish fry we've ever had! I'm begging for their secret recipe but don't think the cook is sharing it. Guess we will be eating here more! Service was great too." ~ Jayne*



## Homestead Lodge & BBQ Dinner

Serving Lunch & Beverages  
Saturday Night BBQ Dinner

facebook

[www.skibrule.com](http://www.skibrule.com)

Ski Brule

# More Fun On The Snow!



## Snowmobile The U.P.

Upper Peninsula and Northern Wisconsin trail systems are accessible from Ski Brule. Iron County Snowmobile routes are well known for wide open trails and scenic journeys through the forests. Ample trailer parking, dining, lodging and variety of activities make Ski Brule the ideal location for your winter get-a-way.



**Silent Sports:** Tracked and flat groomed 30 km trail system circle Ski Brule mountain and the scenic Brule River. Wooded and rolling terrain offer a variety of terrain to snowshoe, cross country ski and fat tire bike. Options of a short trek before hitting the slopes or a full day adventure in the pristine beauty only found in the Northwoods at Ski Brule.



	Trail Pass*	Rental
Cross Country	\$11	\$38
Snowshoe	\$6	\$18
Fat Tire Bike	\$16	\$30 1/2 day

\*Your daily lift ticket includes use of this trail system at no additional trail fee. Fat bike rental includes the trail pass.



1-800-DO-BRULE

[info@skibrule.com](mailto:info@skibrule.com)





## Friends & Neighbors

Enroll online at [www.skibrule.com](http://www.skibrule.com)  
or upon arrival at Ski Brule  
& start SAVING!! FREE To Join!

*"Love Ski Brule for several reasons. It is a great resort for families. A good variety of trails for all levels. The ski school for kids is a great way for them to learn and leave you with some alone time skiing! They have activities during the day at the resort from tubing to petting zoos depending on the day you are there. Kids 9 and under ski free! I'd recommend buying lift tickets in advance and saving some money. The staff is always helpful and looking to make your visit as good as it can be. We had a blast." ~ Christi*

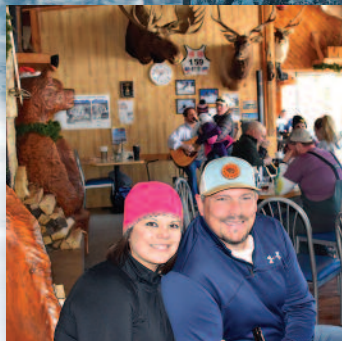
## Join & SAVE \$\$\$

Lodging, Tickets,  
Apparel, & MORE!

### Membership Includes:

- 1/2 Price Tickets Wednesday\*
- \$5 Off Tickets Mon./Tues./Thurs./Fri.\*
- \$2 Glass & \$10 Pitcher Tap Beer Of The Day
- \$4.50 Shot Of The Day
- \$1 Off Drink Of The Day
- \$1 Small Fountain Soda & Coffee
- \$1.25 Small Hot Chocolate
- 5% Off Rental Equipment, Lodging & Apparel\*\*
- 10% Off Evening Dining
- FREE Tubing Sunday\*
- \$10 Kids Rental Equipment Sunday\*
- FREE Kids Mac & Cheese Lunch Sunday\*

\* Excludes 12/24-1/5. FREE Sunday benefits for ticketed (skiing or snowboarding) guests only.  
\$10 Kid's Rental when accompanied by an adult with a daily lift ticket. Kids ages  
9 & under. \*\* Not applicable on already discounted items.



**397 Brule Mountain Road, Iron River, Michigan 49935**





# BOOK YOUR HUNT NOW!

## NORTHERN MICHIGAN DEER HUNTING PARADISE

ALL NATURAL  
HUNTING AREA

1, 2 AND 3-DAY HUNTS  
AVAILABLE IN A  
SPECTACULAR SETTING!

STARTING AT \$2,500

Year-round  
hunting.  
No license  
required!

MEMBER OF



"WORLD CLASS" HUNTING PRESERVE LOCATED IN JOHANNESBURG,  
MICHIGAN, ON OVER 400 ACRES OF TRUE UP NORTH WILDERNESS!



13064 SPARR RD.  
JOHANNESBURG, MI

LOCATED WITHIN 1 HOUR OF 2 MAJOR AIRPORTS



Gene Skiba  
Trent Skiba

989-732-8427

[www.huntershavenwhitetails.com](http://www.huntershavenwhitetails.com)



# Anderson Lake Lodge

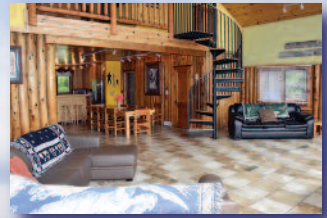


**350 Acres Property On  
50 Acre Secluded Lake**

**Summer: \$500 Nightly\***

**Winter: \$350 Nightly\***

*\*Starting at, nightly minimum varies depending on time of year.*



## WHY ANDERSON LAKE LODGE??

Excellent Fishing • Boats & Kayaks Provided  
Hot Tub • Sauna • Sandy Shoreline

## Anderson Lake Lodge Is For Sale

**Anderson Lake Lodge Is A Unique  
Real Estate Investment Opportunity.**

Qualified inquiries only by email  
[opportunities@skibrule.com](mailto:opportunities@skibrule.com)

**Rental Information & Reservations: 800-362-7853 • [www.skibrule.com](http://www.skibrule.com)**

## Make Your Dream Of Ownership Of The #1 Midwest Resort A Reality.



Is Now Available  
For Purchase

**Qualified inquires via email only: [opportunities@skibrule.com](mailto:opportunities@skibrule.com)**



# The Snow Has Melted ...Now What?

## *Wish for more hours in the day to do all the things there are to do!*

The Upper Peninsula is recognized as one of the "Top Ten Summer Destinations in the World!" Visitors come each year to experience the natural resources – vast forests, more than 300 major lakes, 914 miles of rivers and streams are found in Iron County. It's the foundation for a four-season recreation paradise. Activities range from quiet pastimes such as fishing, camping, hiking and sailing to hold-onto-your-seat excitement white water kayaking and OHV rides. Centrally located in the Upper Peninsula, the options of day trip adventures are endless.

Sporting Clays is a shotgun shooting sport at Ski Brule. Think of it as golf with a shotgun. Clay pigeons are presented to the gunner in ways that mirror flight patterns of game birds or rabbits in their natural habitat. The course is laid out in stations that offer 50 and 100 target rounds. Various trap positions, trap speed, shooting position and flight patterns of the different types of targets create shooting opportunities of targets through the trees, straight down, overhead, quartering away, mimicking a path a real bird may choose.

Gun rental and ammo available.



Brule Village Chalets & Condos	Nightly Rate Includes # of Guests	Summer	Weekly	Monthly Apr./ May / June / Sept. / Oct	Monthly July / Aug
Anderson Lake	16	\$500	\$3,500	N/A	N/A
Timber Lodge	12	\$300	\$2,100	N/A	N/A
Beaver Lodge Top	8	\$225	\$1,350	\$1,500	\$2,250
Beaver Lodge Bottom	6	\$150	\$900	\$1,200	\$1,500
Big Bear Top	8	\$225	\$1,350	\$1,500	\$2,250
Big Bear Bottom	6	\$150	\$900	\$1,200	\$1,500
Heaven's Window	10	\$250	\$1,500	\$1,700	\$2,500
Pioneer 103	6	\$150	\$900	\$1,200	\$1,500
Pioneer Suites	6	\$99	\$594	\$650	\$1,035
Pioneer Elites	4	\$75	\$450	\$550	\$825
Pioneer Standard	4	\$75	\$450	\$550	\$825
Woodlands Top	10	\$200	\$1,200	\$1,400	\$2,000
Woodlands Bottom	4	\$125	\$750	\$950	\$1,250

Two night minimum stay except Pioneer Lodge (min. 1 night) and Anderson Lake (min. 5 nights). Prices subject to change. Multi month rental discounts available.

### **Shooting Rates:**

50 Targets \$20 & 100 Targets \$30

### **Shooting Schedule:**

9:00 a.m. & last squad out 3:00 p.m

### **Mid May-June & September**

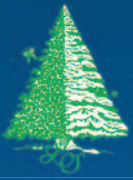
Fri./Sat./Sun. & Midweek by Reservation

### **Open Daily July & August**

Reservations Recommended







*Lac O'Seasons Resort*  
and Stanley Shores Condos

2 Miles from  
Ski Brule

# The Total Northwoods Package

If your family is skiing in the Northwoods surrounded by a winter wonderland, the frosting on the cake of your vacation would be to stay in a cottage surrounded by countless old growth trees and sunset views reflected on serene and frozen Stanley Lake. Lac O' Seasons puts the Northwoods into every Northwoods skiing trip.



OPEN



Every Winter  
Holiday & Ski Camp

- 2, 3 or 4 bedroom cottages
- Indoor Pool, Spa and Sauna
- Fireplaces, electric heat in each

*Live an Adventure.  
Make a Memory.*



Pool,  
Whirlpool  
& Sauna

[lacoseasons.com](http://lacoseasons.com) 1-800-797-5226

176 Stanley Lake Drive, Iron River, MI 49935

# **\$45** Advanced Lift Tickets *The Best Deal On Snow!*

*Valid Anytime in  
2019/20 season.*

*\$10 Savings Plus  
\$1 Gas Coupon*



## **Sale Locations Near You ...**



**Online Sales [www.skibrule.com](http://www.skibrule.com)**

### **Illinois Locations:**

Barrington - Viking Ski Shop  
Chicago - Viking Ski Shop  
Evanston - Wheel & Sprocket  
Oak Park - Wheel & Sprocket

### **Michigan Locations:**

Bessemer - Krist  
Charlevoix - Krist  
Chassel - Krist  
Escanaba - Krist & Mr. Bike and Ski  
Gladstone - Krist, Bramton Bike and Ski  
Gulliver - BP  
Hancock - Krist  
Harvey - Krist  
Houghton - Krist  
Iron Mountain - Krist &  
UP Sport & Spoke  
Ironwood - Krist  
L'Anse - Krist  
Manistique - Krist  
Marquette - Krist  
Menominee - Krist  
Munising - Krist

Ontonagon - Krist  
Negaunee - Krist  
Norway - Krist & BP  
Quinnesec - BP  
Sagola - BP  
Sault Ste. Marie - Krist  
Stephenson - Krist  
Vulcan - BP  
Wakefield - Krist  
Watersmeet - Krist  
Wells - Krist

**Advanced Lift Tickets are non refundable,  
can not be applied to other goods/services,  
can not be extended into following season.**



## **Advanced Lift Ticket Sale Ends 12/24/19**



## Wisconsin Locations:

Antigo - Krist  
Appleton - Wheel & Sprocket  
Ashland - Krist  
Ashwaubenon - Krist  
Brookfield - Wheel & Sprocket  
Crandon - Krist, Marathon & BP  
Crivitz - Krist & BP  
Eagle River - Krist  
Florence - Krist & BP  
Fox Point - Wheel & Sprocket  
Green Bay - Krist, Pete's Garage,  
Play It Again Sports & Zellers Sports  
Hales Corners - Wheel & Sprocket  
Hurley - Krist  
Ladysmith - Krist  
Lakewood - Krist & Shell  
Land O'Lakes - Krist & BP  
Marinette - Krist & Shell  
Medford - Krist  
Mercer - Krist & BP  
Merrill - Krist & Mobil  
Middleton - Wheel & Sprocket  
Minocqua - Krist  
Neenah - Krist  
Niagara - Krist  
Oconto - Krist & Shell  
Oconto Falls - Krist  
Oshkosh - Play It Again Sports,  
Skiers Outlet & Wheel & Sprocket  
Park Falls - Krist  
Pembine - BP  
Peshtigo - Krist  
Phillips - Krist  
Pickerel - BP  
Pulaski - Shell  
Rhineland - Krist & BP  
St. Germain - Krist  
Superior - Krist



*"I first found Ski Brule in 1978... boldly took five of my children plus two high school friends to the Upper Peninsula to*

*learn to ski. Everyone had such a great time that we planned a family trip for the next year. Many more in the years that followed and always adding more family each trip. Everyone loved Brule...even those who had skied the big mountains out west.*

*Why? So many reasons. Great snow and well-groomed trails, of course. Great rental equipment, cozy lodge with food service and ski shop, friendly atmosphere, reliable childcare, fantastic instructors, comfortable accommodations. Ski Brule has it all... something for everyone from the smallest to the "go for it" teenager and everyone in between. The overall costs of staying / skiing at Ski Brule are quite reasonable.*

*Brule is a gem for families with new skiers, young adults, seniors...a variety of trails for all abilities and a friendly and helpful staff who go out of their way to make sure that a Ski Brule experience is the best it can possibly be." ~ Mac*

Suring - Krist & BP  
Three Lakes - Krist, Shell & Northland Clothing  
Townsend - Shell  
Wabeno - Krist & Shell  
Wausau - Krist  
Wausaukee - Krist & BP  
Woodruff - Krist

**Buy Online [www.skibrule.com](http://www.skibrule.com)**





397 Brule Mountain Road  
Iron River, Michigan 49935

There's a peaceful quiet of the new fallen snow. And a special feeling only friends would know. From the chill of the wind in your face to the warmth of a cracklin' fireplace. More of what you ski for, Ski Brule.

